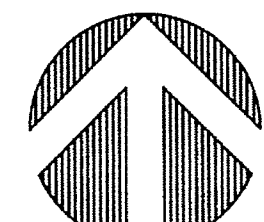
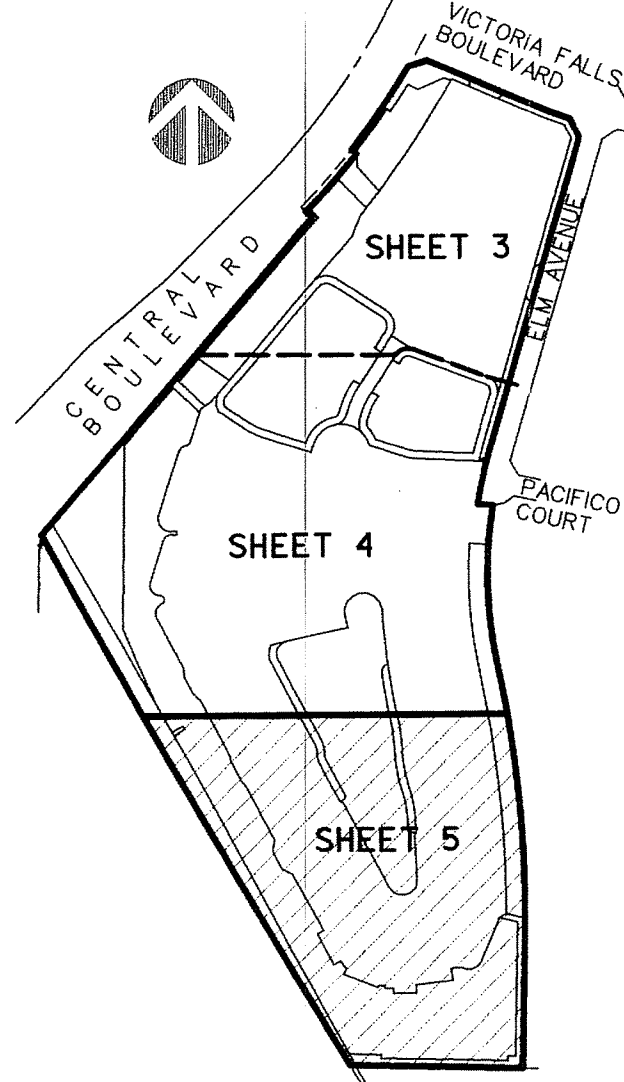


PERIMETER

SURVEYING & MAPPING
Certificate of Authorization No. LB7264
Prepared by: Jeff S. Hodapp, P.S.M.
947 Clint Moore Road
Boca Raton, Florida 33487
Tel: (561) 241-9988
Fax: (561) 241-5182



GRAPHIC SCALE
1" = 50'



KEY MAP
NOT TO SCALE

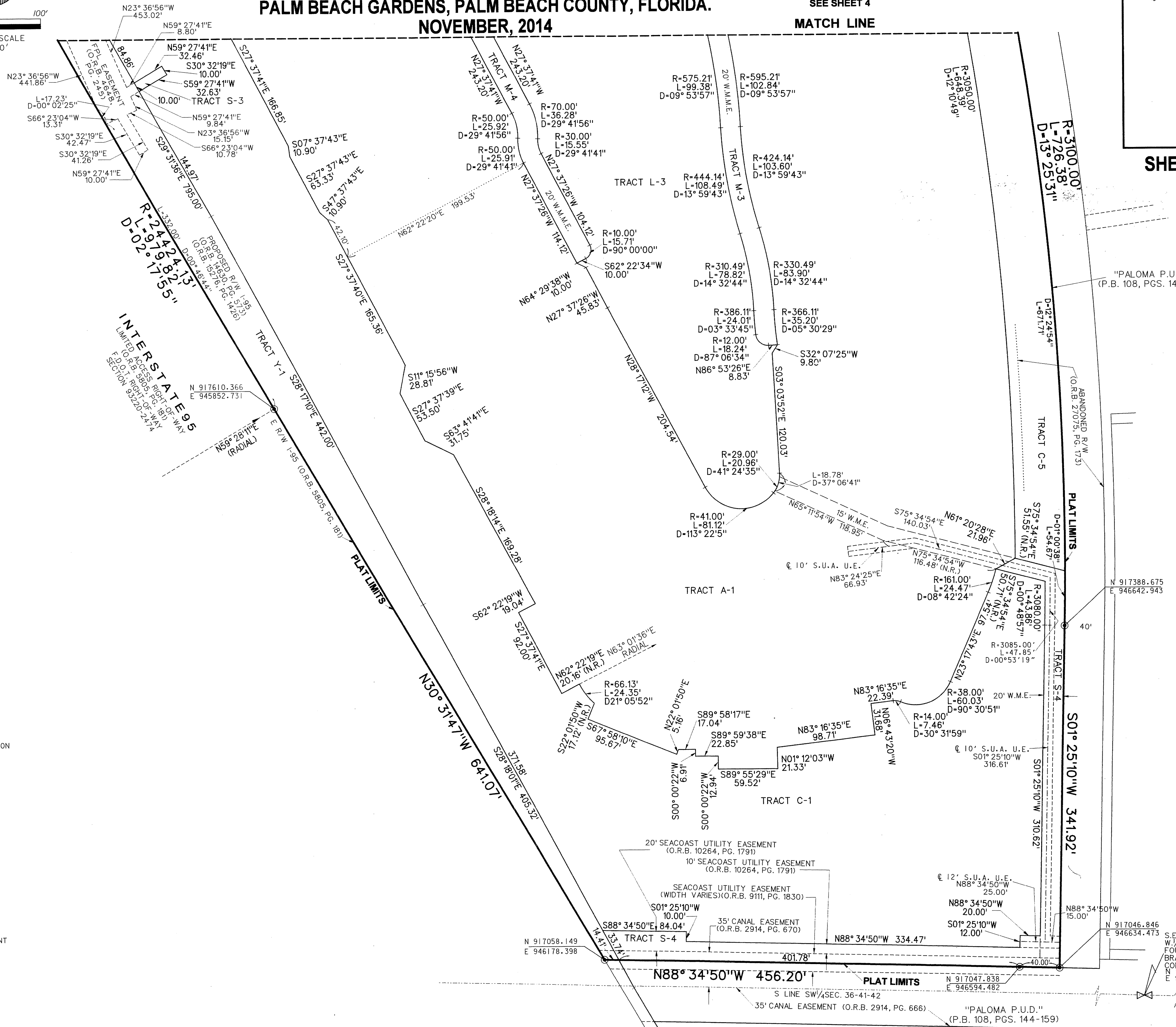
CIMARRON COVE RE-PLAT NO. 2

A REPLAT OF A PORTION OF "CIMARRON COVE RE-PLAT NO. 1" (P.B. 116, PGS. 128-132, P.B.C.R.)
AND A PORTION OF "CIMARRON COVE" (P.B. 111, PGS. 102-106, P.B.C.R.)
IN SECTIONS 35 AND 36, TOWNSHIP 41 SOUTH, RANGE 42 EAST,
PALM BEACH GARDENS, PALM BEACH COUNTY, FLORIDA.
NOVEMBER, 2014

SEE SHEET 4

MATCH LINE

E LINE SE 1/4 SEC. 35-41-42
W LINE SW 1/4 SEC. 36-41-42



LEGEND:

- SET P.R.M. (UNLESS OTHERWISE NOTED) - 4" X 4" CONC. MON. WITH ALUMINUM DISK STAMPED P.R.M. - LB7264
- ⊕ CENTERLINE

ABBREVIATIONS:

- CH CHORD BEARING
- CONC. CONCRETE
- COR. CORNER
- D DELTA (CENTRAL ANGLE)
- F.D.O.T. FLORIDA DEPARTMENT OF TRANSPORTATION
- L ARCLength
- L.A.E. LIMITED ACCESS EASEMENT
- L.B. LICENSED BUSINESS
- L.E. LANDSCAPE EASEMENT
- L.S. LICENSED SURVEYOR
- L.S.E. LICENSED SURVEYOR
- LIFT STATION EASEMENT
- MON. MONUMENT
- O.R.B. OFFICIAL RECORDS BOOK
- N.P.B.C.I.D. NORTHERN PALM BEACH COUNTY IMPROVEMENT DISTRICT
- N.R. NON-RADIAL
- P.A.E. PEDESTRIAN ACCESS EASEMENT
- P.B. PLAT BOOK
- P.B.C.R. PALM BEACH COUNTY RECORDS
- PG. PAGE
- P.C.P. PERMANENT CONTROL POINT
- P.R.M. PERMANENT REFERENCE MONUMENT
- P.S.M. PROFESSIONAL SURVEYOR & MAPPER
- P.U.D. PLANNED UNIT DEVELOPMENT
- R. RADIAL
- R.E.E. ROOF ENCROACHMENT EASEMENT
- R/W RIGHT-OF-WAY
- S.E. SIDEWALK EASEMENT
- SEC. SECTION
- S.F. SQUARE FEET
- SLE SEWER LINE EASEMENT
- S.U.A. SEACOAST UTILITY AUTHORITY EASEMENT
- U.E. UTILITY EASEMENT
- W.L. WATER LINE EASEMENT
- W.M.E. WATER MANAGEMENT EASEMENT
- WMME WATER MANAGEMENT EASEMENT
- WMMAE WATER MANAGEMENT ACCESS EASEMENT

S.E. CORNER
SEC. 36-41-42
FOUND P.B. COUNTY
BRASS DISK IN
CONC. MON.
N 916923.882
E 950755.094

S.E. CORNER
W 1/2 SEC. 36-41-42
FOUND P.B. COUNTY
BRASS DISK IN
CONC. MON.
N 916984.144
E 948127.377

S. LINE S.E. 1/4
SEC. 36-41-42
N88° 41'11"W
2628.31'